

NEW

A truly innovative mating disruption pheromone to control the Box tree caterpillar



Box T Pro Press®

syngenta®

Description

Box T Pro Press® is a mating disruption system for managing the Box tree caterpillar. It is an approved and registered professional plant protection product for use only by staff qualified to use professional plant protection products against the Box tree caterpillar (*Diaphania perspectalis*). It contains a pheromone applied directly to the box plant. By saturating the area with female pheromones the males are unable to find the females and mating and egg laying thereby inhibited. This disrupts mating and **decreases the number of defoliating caterpillars.**

First outbreaks were noted in Europe in 2007. Where there have been outbreaks this has been a difficult pest to control. Box tree caterpillar larvae only eat boxwood tree leaves for food, and can completely consume entire swaths of the tree, leading to plant mortality. Numerous generations will hatch and flourish across the season, it is therefore crucial to control the pest from the outset.

Box T Pro Press is **long lasting and easy to apply.** It offers an innovative approach to the protection of ornamental box.



Key benefits

Long lasting... High performance diffusion

The microencapsulated formulation composed of vegetable oil, natural wax and pheromone allows for a **controlled release of the pheromone for 3 months.**

This means **less maintenance and better protection of your boxwood.**



Easy to use and store

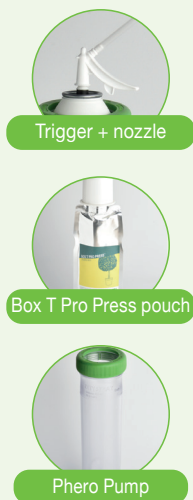
Box T Pro Press is supplied in pouches and applied only using the special Pheropump applicator.

The pheromone is applied in dollops (the size of a small coin) on the trunk or the nook of the branches making it **very safe and practical to apply.**

Box T Pro Press can be stored for 2 years between 15°C and 25°C when unopened.

Set up & Use

Components of the application device



Application method

To apply, press the trigger of the hand dispenser.

A short pressure on the trigger will deliver a standard dose the size of a small coin. A few hours after applying, the water contained in the product will evaporate, leaving a thin, scarcely-visible layer of wax.

Method

Precision application

The Boxwood chart determines how to apply the Box T Pro Press depending on the type of site being protected. Please always refer to the product label before use.

The type of boxwood

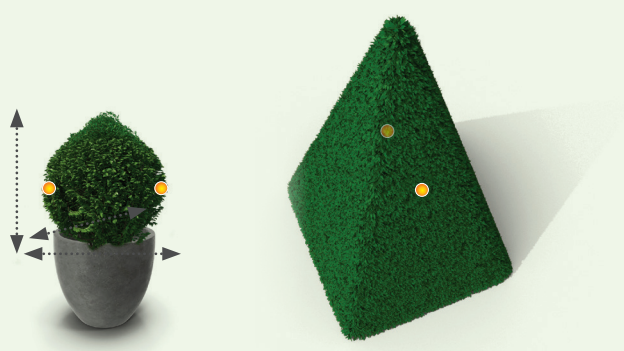
Ornamental box trees can have different shapes: ball, pyramid, hedges etc. The amount of pheromone needs to be adapted depending on the shape.

The leaf volume

The recommended pheromone application will also consider the dimensions of the box trees to protect height, width and length. These elements must be considered to optimally use Box T Pro Press. Thanks to a tool made available and Using the diagram below, Syngenta will advise you on most suitable method of application.

Boxwood Chart

Isolated Boxwood



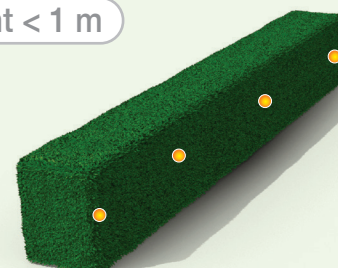
Recommendations using the decisional tool

- Apply at least 2 diffusion points by boxwood
- Two doses / m³
- Distributed as evenly as possible, inside the foliage

Boxwood border

Width < 1 m

Height < 1 m



Recommendations

- One dose every 2 meters in, starting the first at zero
- Distributed halfway up, inside the foliage

Applications

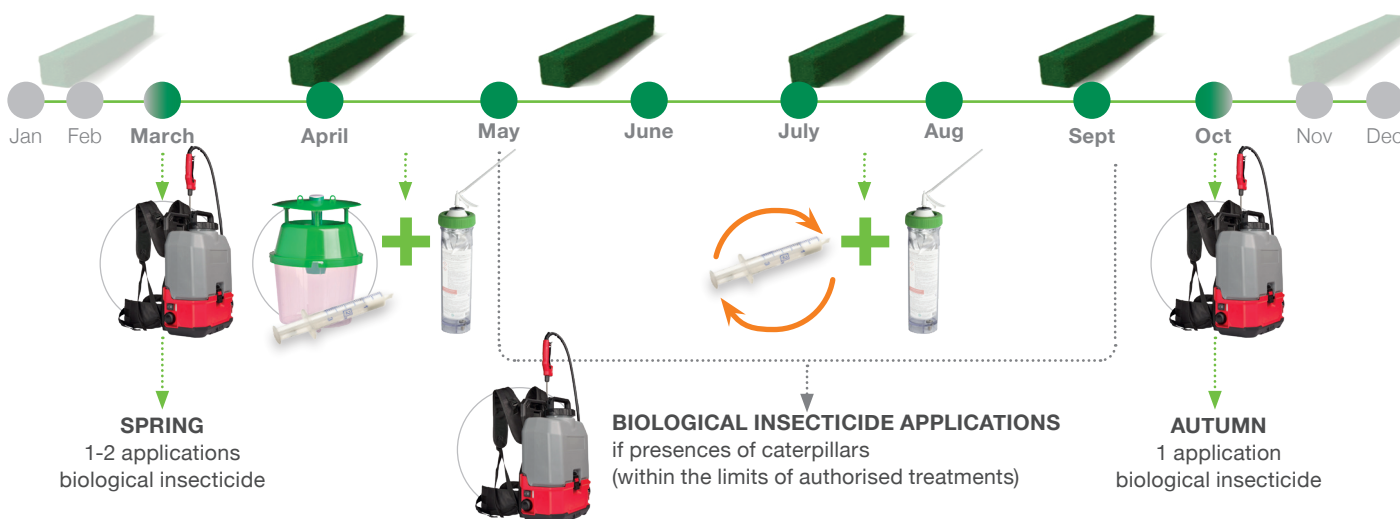
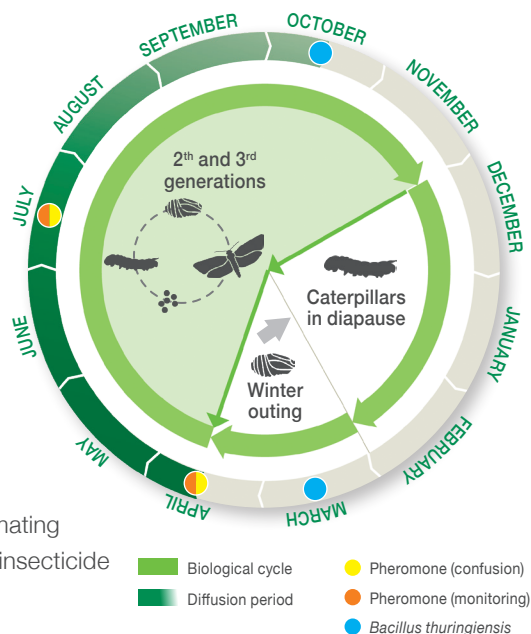
Mating disruption

Positioned before the emergence of adults, the sexual confusion pheromone acts on the population from the first flights. It disrupts communication between males and females and limits their mating.

Recommendations may evolve

Climatic conditions influence the biology of the pest. Depending on the region, the moths emerge early early May to the end of June. The positioning of the pheromone will have to be adapted accordingly.

Box T Pro Press is an important part of integrated pest management but adverse environmental conditions and or high initial populations of females may mean that mating could take place. Therefore pest monitoring and application of a suitably approved insecticide product in accordance with its label such as one containing *Bacillus thuringiensis* var *kurstaki* early in the season or when required is recommended.

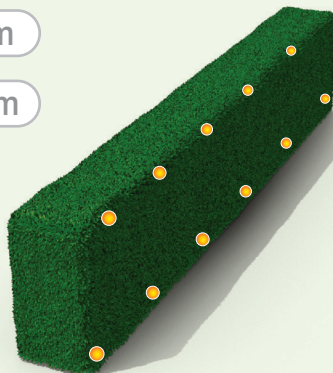


Please refer to the product label before use and the guidelines of the decision-making tool available on



Width < 1 m

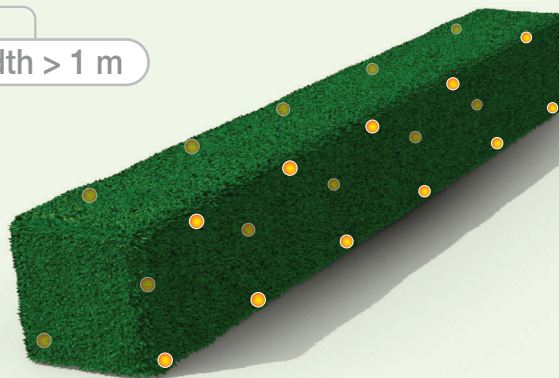
Height > 1 m



Recommendations

- One dose every meter starting the first at zero
- Distributed alternately in V shape (up and down successively, inside foliage)

Width > 1 m



Recommendations

- One dose every meter starting the first at zero
- Distributed in a V shape (top and bottom successively, inside foliage)
- On each size of the boxwood



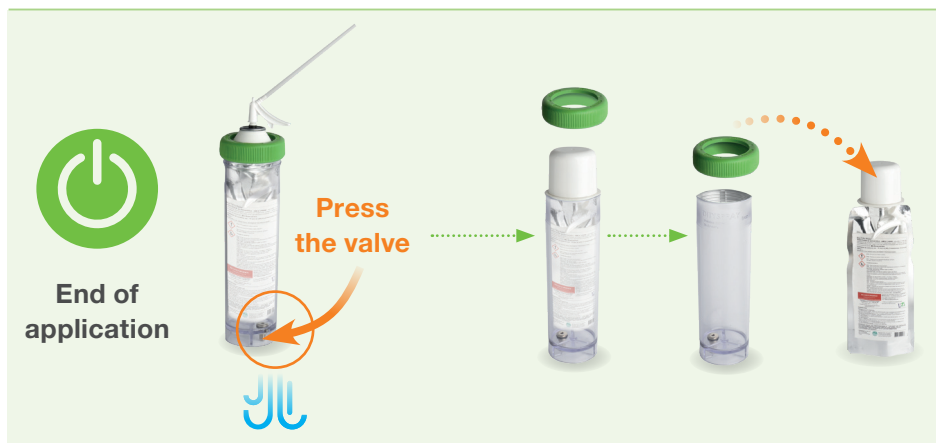
Box T Pro Press®

syngenta®


Box T Pro Press Product Overview

Active substance	Formulation	Number of applications
70 g/kg of (Z)-11-hexadecenal (7%p/p)	Capsule suspension	2 per annum between mid April and mid July with 60-80 days between the 2 applications
Packaging	Diffusion	Storage
One sachet contains 250 grams applied with an air compressed pump (Pheropump) Limited to 750 gram per Ha	3 months	Closed: 2 years at room temperature (between 15°C & 25°C) in a dry, well ventilated place, preferable pesticide store Open: usable until next application (3 months), store in refrigerated conditions (between 4°C & 8°C)

Post application



How to use:

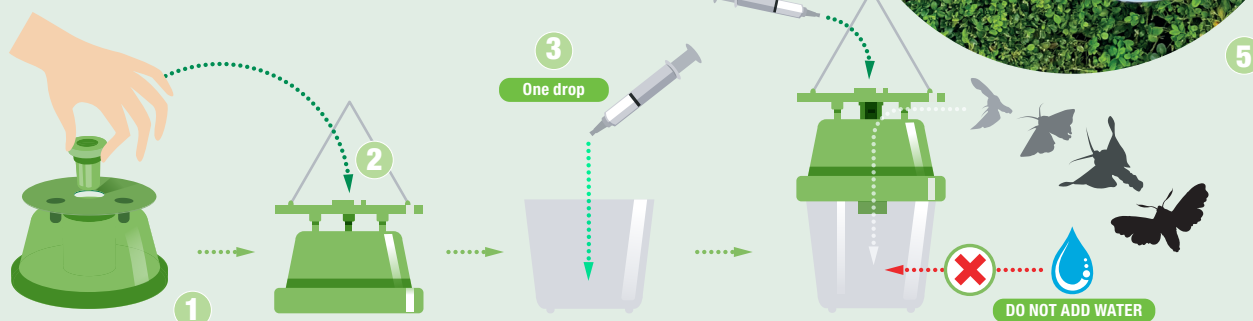
-  Apply to dry plants, ensure no irrigation or rainfall expected within 24 hours.
-  During handling and application, please wear protective gloves (refer to safety data sheet).
-  Can only be used with the Phero Pump: a reusable applicator with compressed air.
-  **Danger - H411**
Toxic to aquatic life with long lasting effects.

MONITORING

Flight Monitoring

To confirm the effectiveness of the treatment and the pressure of the pest, traps containing the **BOX T PRO CAPS** pheromone will be positioned inside and outside of the area of sexual confusion.

Trap density	1 to 2 traps / box wood «area»suspended midway on the outside of the Boxwood
Diffusion	3 months
Diffusion radius	≈ 5 m - 1 ml syringe per trap
Shelf-life	30 months (closed)



 **Box T Pro Press®**

syngenta®

For more information, our enquiry hotline number is 0800 1696058, emergency number is 01484 538444 or email our technical consultant: customer.services@syngenta.com

Keep out of the reach of children. Keep away from pets. Keep away from food and drink. Store in its original packaging and respect the uses, doses, conditions and precautions for use mentioned. Collect spillage. DO not release to the environment. Do not freeze. Wear protective gloves and glasses. Do not pollute water with product or its packaging. Do not clean application equipment near surface water. Do not eat, drink or smoke while using. Wash hands after handling. Use only outdoors or in a well ventilated area. Dispose of emptied and rinsed packaging in accordance with current legislation. In case of contact with eyes, rinse with water as a precaution. If on skin, wash off with plenty of water. If swallowed, do not induce vomiting, rinse mouth and consult a doctor.

© Registered trademark M2i. For the conditions of use and the recommended uses, doses and conditions: www.syngentaturf.co.uk

