

Transport & Handling Equipment

Horti Display Handling Systems

Horti Display



The Fargro Danish trolley comes with 3 shelves and consists of a heavy duty steel base, removable rolled steel corner posts, plywood shelves and nylon wheels.

FARGRO DANISH TROLLEY

F/CODE	DESC	£
TROLDAN	Danish Trolley Complete	120.00



Both fixed and swivel spare wheels available.

SPARE WHEELS FOR DANISH TROLLEYS

F/CODE	DESC	£
TYRE15	Danish Trolley Wheel Fixed	8.50
TYRE16	Danish Trolley Wheel Swivel	8.50



F/CODE	DESC	£
TROLDANP	Post for Danish Trolley	5.38
TROLDANS	Extra Plywood Shelf for Danish Trolley	10.00
TROLDANB	Base for Danish Trolley	68.00



Wippon Transporters



The Horti-Display is an excellent way to present your flowers, plants or any other product. With the Horti-Display you will give your presentation a professional look, and it is easy and convenient to use.

Trolley base sold separately.

HORTI DISPLAY WITHOUT BASE

F/CODE	REF	DESC	£
HDISP	1014-1010	Horti Display (Without Base)	138.65



Add a stylish Horti-roof to your cart that protects your products from the rain and sun. The roof is customizable: add your custom colours and/or logo.

HORTI DISPLAY AWNING

F/CODE	REF	DESC	£
HDISPAW	1014-1010	Horti Display Awning	143.40



Display Maker

It is possible to easily transform your Danish trolley into a nice store presentation with the Display-Maker. The display maker lifts the two posts at the back of the trolley to display the shelves at an angle.

x2 display makers required per trolley.



DISPLAY MAKER

F/CODE	REF	£ EACH
DISMK	1001-1000	17.47

Watering Trays Heavy Duty & Reusable



The water trays are designed to provide your plants and flowers on Euro pallets with water.

Advantages: longer selling period, less waste, and a better product.



WATER RAY FOR EURO PALLET BLACK

F/CODE	REF	SIZE L x W x H MM	THICK MM	£
WT523	1015-1020	1200 x 800 x 52	3	23.53

The water trays are designed to provide your plants and flowers on Danish trolleys or CC containers with water.

Advantages: longer selling period, less waste, and a better product.

Available in two thicknesses.

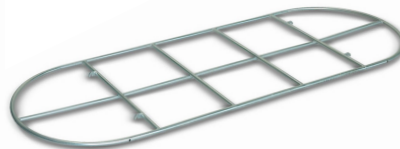


WATER TRAY FOR DANISH TROLLEY BLACK

F/CODE	REF	SIZE L x W x H MM	THICK MM	£
WT522	1015-1004	1258 x 555 x 52	2	13.79
WT523	1015-1002	1258 x 555 x 52	3	15.28

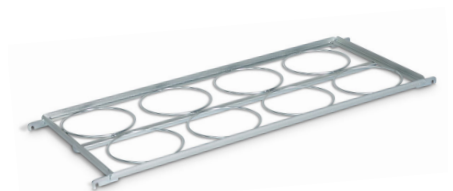


Display Shelves



Simple and affective way to display hanging baskets from your Danish Trolley.

Strong and robust to withstand heavy loads.



The flower bucket rack is a shelf that can be placed in Danish trolleys and CC containers to display or transport flower buckets. Can also be used to transport 12" round cone hanging baskets. The rings are made of galvanized steel and have a diameter of 24cm.

This product can also be used in combination with our Horti-Display of Display maker.

HANGING BASKET WRACK FOR DANISH TROLLEYS

F/CODE	REF	SIZE L x W CM	£
HGBH	4002-1002	225 x 87	85.00

FLOWER BUCKET SHELF FOR DANISH TROLLEY

F/CODE	REF	SIZE CM	£
HIFB	4002-1010	124 x 55	37.23

Tool Box & Writing Board



The toolkit holder can easily be attached to any desired height by attaching it to the hooks of the stand on your Danish Trolley.

Our writing boards can be hooked between the two poles of a Danish container.



**TOOL BOX
FOR DANISH TROLLEY DANISH**

F/CODE	REF	£ EACH
HITB	4002-1035	42.23

**WRITING BOARD
FOR DANISH TROLLEY**

F/CODE	REF	£ EACH
HIWB	1025-1000	17.35

Horti Wrap Machine

The Horti-Wrap™ Machine employs a simple concept to wrap Danish trolleys with most kinds of film. Trolleys are pushed onto the turntable and as this is manually rotated, the film is wound around the trolley as it moves up the 2m mast, wrapping the trolley from the base to the top.

Movement is controlled by foot pressure on the base plate. Using large machine size rolls of film reduces costs compared to hand wrapping.



HORTI-WRAP™ MACHINE

F/CODE	REF	£ EACH
HORTWRAP	W-1007-1000	2,525.52

Blocking Discs



With our blocking discs, you easily secure your Danish trolleys, auction carts or CC containers. Once you put a caster in the hole of a disc, the cart will no longer move/roll, which makes applying wrapping film to the cart an easy task.

The blocking discs can easily be transported or placed thanks to their simple design. The bottom is equipped with anti-slip, and the extra steel rings prevent them from sagging.

**BLOCKING DISCS FOR DANISH
TROLLEYS OR CC CONTAINERS**

F/CODE	REF	£ EACH
HORBDDT	1003-1000	35.75

Wippon Transporters



A simple yet effective way of moving Danish trolleys around the nursery or garden centre.

The wippon car is located under the trolley to enable the pneumatic wheels to support the trolley and move over uneven ground. The trolley can be locked onto the wippon car during movement.

Wheels: 100mm wide x 400mm diameter.



The 4x4 version of the wippon car has 4 wheels and a handle. This makes creating a train of wippon cars possible which can be pulled with an electric vehicle.

This makes the 4x4 wippon car perfect for the transportation of Danish trolleys and CC containers over soft surfaces such as ground covers or tiny gravel.

WIPPON CAR DANISH TROLLEY MOVER

F/CODE	DESC	£ EACH
WWT	Wippon Wagon Transporters	212.19

WIPPON WAGON TRANSPORTERS 4x4

F/CODE	REF	£ EACH
WWT4	1002-1000	415.97



The H-400 is an electric powered tug that is used for pulling heavy loads, such as transportation trolleys and Danish trolleys filled with shelves. Thanks to its compact size, it is easy to manoeuvre.

A new digital controller puts the braking energy back into the battery again. The H400 can be used for 24 hours after one battery charge.

Together with the correct couplings the H400 Tug can pull a train of Danish Trolleys with ease.

- Supplied with AGM battery and charger (Longer life lithium batter available on request)
- Length 90cm x Width 51cm x Height 104cm
- Towing capacity 640kg

ELECTRIC POWERED TUG H-400

F/CODE	REF	£
HTH400	1024-1000	3344.2



The Trike 1200 has a tensile weight of 1200kg which makes it ideal for transporting heavy loads. Robustly built the Trike 1200 is the ideal machine for working in nurseries and warehouses.

Together with the correct couplings the Trike 1200 can pull a train of Danish Trolleys with ease.

- Supplied with AGM battery and charger (Longer life lithium batter available on request)
- Length 143.4cm x Width 72.2cm x Height 110.2cm
- Towing capacity 1600kg

HORTI-TRIKE XL 1200

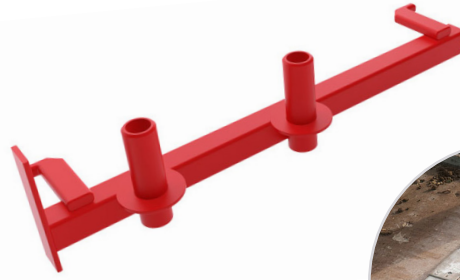
F/CODE	REF	£
HTXL1200	1024-1005	5895.15

F/CODE	DESC	£
HTBS	Back Support For Horti Trike	143.85
HTCR	Crate For Horti Trike	72.65



Couplings

fargro[®]



To attach Danish Trolley to Horti Trike & H-400 Electric Tug when using the ECC13 coupling.

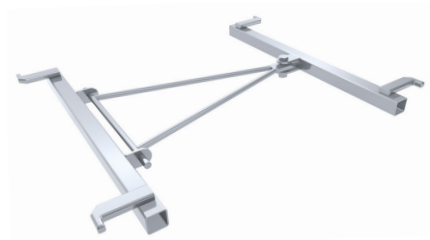
FRONT HOOK

F/CODE	REF	£
HT1	ECC1	38.24



HOOK FOR HORTI TRIKE & H-400 ELECTRIC TUG

F/CODE	REF	£
HIT13	ECC13	74.73



COUPLING HOOK TO ATTACH DANISH TROLLEY TO DANISH TROLLEY

F/CODE	REF	£
HIT2	ECC2	52.48



TOWING BALL FOR HORTI TRIKE & H-400 ELECTRIC TUG

F/CODE	REF	£
HT51	ECC51	38.24



Horti-Grow 4 Layer Growing System



The Horti-Grow DC is a vertical growing system based on a standard Danish trolley so is fully portable. Excellent for the cultivation of micro vegetables, baby leaves, lamb's lettuce and various fruit and vegetables.

LED-Lighting

LED-Lighting Experiments in a controlled environmental chamber show that plants grow better under conditions replicating a clear sunny day than when only exposed to blue and red light. Our LED lights introduce the latest technology in lighting culture. The spectrum is adjusted to provide the same light as a clear sunny day.

Our LED Lights produce little warmth and need no extra cooling. This makes them very energy efficient. The output voltage is 48 volts.

The combination with the IP65 waterproof rating makes the LED Lights 100% safe, even under the most difficult conditions.

Automatic Water System

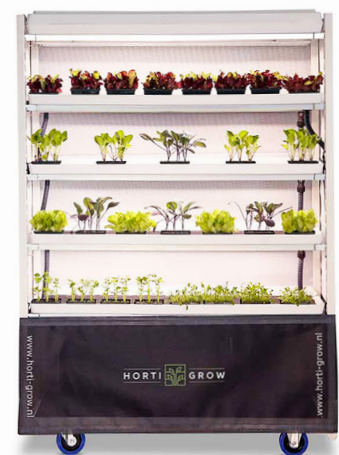
The Horti-Grow is equipped with a fully automatic water system. The system is based on irrigation whereby the water trays automatically fill with water at the time set by you. After the desired duration, the water trays will automatically empty again.

Various internal trials with sprouts, baby leaves, lamb's lettuce, arugula, strawberries and even tomatoes have proved very successful. The Horti-Grow also allows you to grow herbs entirely according to your wishes.

The Horti-grow is supplied as a complete package containing;

- Trolley with Four Growing shelves.
- 4 sets of pre-fixed LED Lighting.
- 4 Water trays.
- Water tank, pump and all pipes and connectors.
- Full surround trolley jacket that can be removed in sections.
- Extra storage tray and lid on the top of the trolley.

F/CODE	£ EACH
HGTORL	1991.95



Four growing shelves



Water tank pump



Full surround trolley jacket