

Distributed by

fargro®

armorgard
ticking every box.



»
**Trusted
to get the
job done**



armorgard tuffbank™

Our best-selling secure
site storage solution

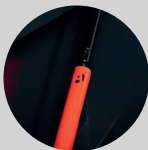
- Safely secure tools and equipment 24/7
- Suitable for sites and vans
- Powder coated for maximum durability
- Robust construction from heavy-duty steel plate throughout



» WATCH THE
TUFFBANK™
IN ACTION



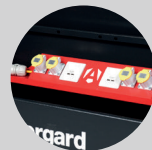
TB6



STRONG GAS STRUTS AND
SLAMSTOP LID STAY FITTED
AS STANDARD - CONFORMS
TO INDUSTRY STANDARDS



INSET HANDLES FOR A
MORE STREAMLINED
PRODUCT REQUIRING
LESS SPACE



UNIQUE POWERSHELF
SECURELY CHARGES
TOOLS AND MOBILE
DEVICES

TOOL AND EQUIPMENT STORAGE



Product Code	Description	Weight (kg)	External Dimensions W x D x H (mm)	Internal Dimensions W x D x H (mm)
TB1	Van Box	50	950 x 505 x 460	920 x 470 x 450
TB12	Truck Box	58	1150 x 495 x 460	1120 x 470 x 450
TB21	Site Box	60	760 x 615 x 640	730 x 590 x 540
TB2	Site Box 4x2x2	80	1150 x 615 x 640	1120 x 590 x 540
TB3	Site Box 4x3x2	97	1150 x 615 x 930	1120 x 590 x 840
TBC4	Site Chest 4x4x2	127	1150 x 615 x 1265	1120 x 590 x 1175
TBC5	Site Chest 5x4x2	153	1525 x 615 x 1265	1495 x 590 x 1175
TB6	Truck Box 6x2x2	119	1925 x 615 x 640	1895 x 590 x 540
CLEK	Lifting Eye Kit	2	N/A	N/A
TBFK	TuffBank™ Fixing Kit	0.5	N/A	N/A
TBS4	TuffBank™ Shelf	3	1100 x 150 x 95	1095 x 145 x 25
TBDS4	TuffBank™ Deep Shelf	4	1100 x 250 x 95	1095 x 245 x 25
TBDS5	TuffBank™ Deep Shelf	6	1460 x 250 x 95	1455 x 245 x 25
TBS4P	TuffBank™ PowerShelf	6	1100 x 150 x 95	1095 x 145 x 25
TBDS4P	TuffBank™ Deep PowerShelf	6	1100 x 250 x 95	1095 x 245 x 25
TBDS5P	TuffBank™ Deep PowerShelf	8	1460 x 250 x 95	1455 x 245 x 25

Note: Weights and dimensions are approximate. External dimensions include handles.

armorgard **oxbox™**

**The robust, good value
solution for securing
tools and equipment**

- Cost-effective range of secure tool vaults - ideal for when weight matters!
- Low visibility security solution
- Replacement keys available for all sizes

TOOL AND EQUIPMENT STORAGE



Product Code	Description	Weight (kg)	External Dimensions W x D x H (mm)	Internal Dimensions W x D x H (mm)
OX05	Van Box	27	810 x 470 x 385	755 x 425 x 370
OX1	Van Box	32	885 x 470 x 450	830 x 425 x 435
OX2	Truck Box	41	1155 x 450 x 460	1130 x 425 x 445
OX3	Site Box 4x2x2	60	1210 x 625 x 645	1115 x 595 x 550
OX4	Site Chest 2x2x4	89	1215 x 595 x 1185	1125 x 570 x 1090
OX6	Truck Box	60	1740 x 515 x 445	1715 x 485 x 430

Note: Weights and dimensions are approximate. External dimensions include handles.

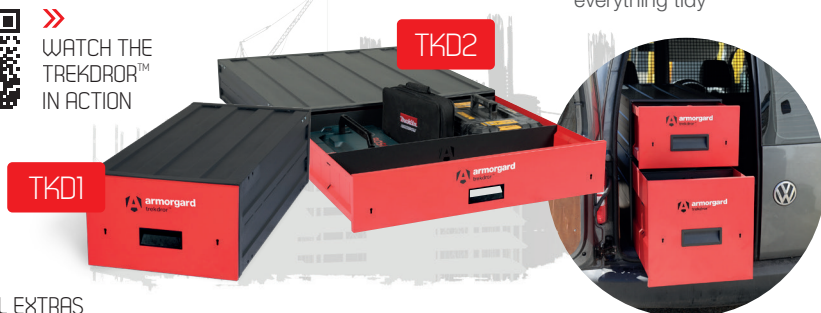
armorgard trekdror™



»
WATCH THE
TREKDROR™
IN ACTION

**Our range of robust, steel
tool drawers for vehicles
and small spaces**

- Range of robust and lockable tool drawers for your van or workshop
- Available in three sizes
- Tool drawers offer the ultimate in versatility, with removable partitions to keep everything tidy



»
OPTIONAL EXTRAS



MOUNTING KIT



DIVIDER KIT



ANTI-SLIP
RUBBER MAT



STACKING KIT

Product Code	Description	Weight (kg)	External Dimensions W x D x H (mm)	External Dimensions 2 (including open drawer) W x D x H (mm)	Internal Dimensions W x D x H (mm)
TKD1	TrekDror™	44	490 x 1105 x 300	490 x 1900 x 300	405 x 1040 x 245
TKD2	TrekDror™	63	980 x 1105 x 200	980 x 1905 x 200	900 x 1040 x 145
TKD3	TrekDror™	58	490 x 1105 x 490	490 x 1905 x 490	405 x 1040 x 435

Note: Weights and dimensions are approximate. External dimensions include handles.

armorgard toolbin™

**The lightweight vault
for storing everyday
tools and materials**

- Ideal for storage of less valuable items, where high security is not a priority
- Versatile, cost-effective, galvanised steel construction
- Lockable with 2 x hasp and staples
- Weatherproof design to keep tools protected



STRENGTHENERS ON
ALL FOUR CORNERS

Product Code	Description	Weight (kg)	External Dimensions W x D x H (mm)	Internal Dimensions W x D x H (mm)
GB3	ToolBin™	23	1190 x 585 x 850	1150 x 555 x 825

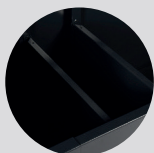
Note: Weights and dimensions are approximate. External dimensions include handles.

armorgard

strimmersafe vault™

The ultra-tough secure vault
for storing trimmers and
other long-handled tools

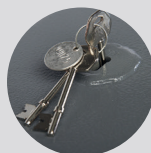
- Ultra-tough construction with multi-purpose application
- Secure the engine part in the box with space for tools too
- Full-length cover plate for use when trimmers are not being stored



**INTERNAL DIVIDER
SYSTEM (EXCEPT THE
SSVX6)**



**STRONG GAS STRUTS
FITTED AS STANDARD
- CONFORM TO INDUSTRY
STANDARDS**



**KEYED ALIKE 5-LEVER
DEADLOCKS, SERIAL
NUMBERED FOR EASY KEY
REPLACEMENT**

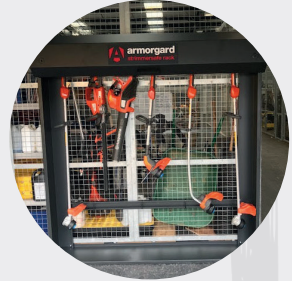
Product Code	Description	Weight (kg)	External Dimensions W x D x H (mm)	Internal Dimensions W x D x H (mm)
SSV12	StrimmerSafe Vault™	69	1275 x 515 x 450	1190 x 445 x 445
SSVX6	StrimmerSafe Vault™	63	1800 x 555 x 445	1710 x 480 x 440
SSV6	StrimmerSafe Vault™	141	1970 x 675 x 665	1880 x 605 x 580

Note: Weights and dimensions are approximate. External dimensions include handles.

The unique upright
storage system for
securing your trimmers

armorgard strimmersafe rack™

- Hook storage for up to six trimmers
- Liquid-tight base contains accidental spills of oil or fuel
- Facility for bolting to a wall
- High-security features including 5-lever deadlocks and hinged heavy-duty lid



SUPPLIED
FLAT PACKED



HIGHLY SECURE
UNIT TO PROTECT
YOUR VALUABLE
EQUIPMENT FROM
THEFT AND DAMAGE

LID IS FITTED WITH 2
HYDRAULIC GAS ARMS
FOR EASY LIFTING

TOOL AND EQUIPMENT STORAGE

Product Code	Description	Weight (kg)	External Dimensions W x D x H (mm)	Internal Dimensions W x D x H (mm)
SSR	StrimmerSafe Rack™	93	2055 x 365 x 2085	N/A

Note: Weights and dimensions are approximate. External dimensions include handles.

Our quick-assembly,
flat-pack, modular
solution for on-site
secure storage

armorgard forma-stor™

- Fully galvanised and powder coated for maximum durability
- Forklift pockets for easy transportation
- Can be delivered pre-erected - additional costs
- Available in 4 standard sizes



WATCH THE
FORMA-STOR™ BEING
BUILT IN 6 MINUTES



FORMA-STOR™ ACCESSORIES



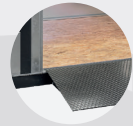
BLOKKABAR



CERTIFIED SHELVES



LED LIGHTING



HEAVY-DUTY RAMP



FORK SKIDS FOR EASY
TRANSPORTATION



LIFTING EYES
FOR CRANE LOADING



STRONG FITTED
OSB FLOOR



FLAT-PACKED
FOR EASY TRANSPORTATION

Product Code	Description	Weight (kg)	External Dimensions (including protrusions) W x D x H (mm)	Internal Dimensions W x D x H (mm)
FR100-T	Forma-Stor™	251	2075 x 1120 x 2160	1920 x 970 x 1950
FR200-T	Forma-Stor™	384	2075 x 2075 x 2160	1920 x 1920 x 1950
FR300-T	Forma-Stor™	467	2075 x 2990 x 2160	1920 x 2840 x 1950
FR400-T	Forma-Stor™	594	2075 x 3995 x 2160	1920 x 3840 x 1950
FRS2	Forma-Stor™ Shelf	20	1970 x 520 x 30	N/A
FRBL2	BlokkaBar	23	1960 x 170 x 110	N/A
FRR4	Forma-Stor™ Ramp	37	1185 x 750 x 100-195	N/A
FRLK1	110V Forma-Stor™ Lighting Kit	5	N/A	N/A
FRLK2	230V Forma-Stor™ Lighting Kit	5	N/A	N/A

Note: Weights and dimensions are approximate. External dimensions include handles.

Our COSHH compliant,
quick-assembly, modular
storage unit for the safe
storage of hazardous
substances

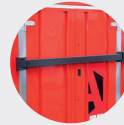
armorgard

forma-stor COSHH™

- Comes flat-packed and can be constructed in 10 mins
- Galvanised panels fasten neatly together to provide a robust, weatherproof store
- Forklift pockets for easy manoeuvring by forklift
- Meets relevant COSHH regulations
- Crane lifting eyes supplied as standard



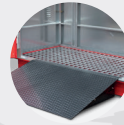
FORMA-STOR™ ACCESSORIES



BLOKKABAR



CERTIFIED SHELVES



HEAVY-DUTY RAMP



Product Code	Description	Weight (kg)	External Dimensions (including protrusions) W x D x H (mm)	Internal Dimensions W x D x H (mm)
FR100-C	Forma-Stor COSHH™	277	2075 x 1120 x 2255	1920 x 970 x 1960
FR200-C	Forma-Stor COSHH™	415	2075 x 2075 x 2255	1920 x 1920 x 1960
FR300-C	Forma-Stor COSHH™	553	2990 x 2075 x 2255	2840 x 1920 x 1960
FR400-C	Forma-Stor COSHH™	663	3995 x 2075 x 2255	3840 x 1920 x 1960
FRS2	Forma-Stor™ Shelf	20	1970 x 520 x 30	N/A
FRBL2	Blokkabar	23	1960 x 170 x 110	N/A
FRR4	Forma-Stor™ Ramp	37	1185 x 750 x 100-195	N/A

Note: Weights and dimensions are approximate. External dimensions include handles.

The cost-effective,
secure container for
storing hazardous
fuels and chemicals

armorgard **transbank™**

- Complies with all HSE regulations for storing and transporting hazardous goods
- Built for the size of 20L and 5L fuel storage
- Constructed from heavy-duty steel plate
- Integral fixing points allow vaults to be secured to the floor or vehicle



OVER-CENTRE CATCH
WITH PADLOCK FACILITY

FLAME ARRESTER GAUZE
FITTED ON ALL BOXES

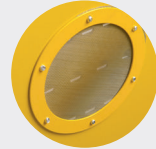
Product Code	Description	Weight (kg)	External Dimensions W x D x H (mm)	Internal Dimensions W x D x H (mm)	Sump Capacity (L)
TRB1	TransBank™	13	430 x 415 x 365	345 x 345 x 335	15
TRB2	TransBank™	20	530 x 485 x 540	445 x 415 x 510	35
TRB3	TransBank™	24	705 x 485 x 540	620 x 415 x 510	70
TRB4	TransBank™	28	880 x 485 x 540	790 x 415 x 510	70
TRB6	TransBank™	38	1195 x 485 x 540	1110 x 415 x 510	90

Note: Weights and dimensions are approximate. External dimensions include handles.

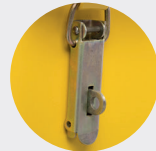
The safe vault for storage
and transportation of smaller
volumes of chemicals

armorgard
transbank
chemTM

- Finished in bright yellow with relevant hazard warning signs
- Fully welded and tested sump base to prevent leakage
- Specially designed for chemical storage
- Integral fixing points allow vaults to be secured to the floor or vehicle



VENTILATION
TO PREVENT BUILD-UP
OF FUMES



OVER-CENTRE CATCH
WITH PADLOCK FACILITY

HAZARDOUS GOODS STORAGE

Product Code	Description	Weight (kg)	External Dimensions W x D x H (mm)	Internal Dimensions W x D x H (mm)	Sump Capacity (L)
TRB1C	TransBank Chem TM	13	430 x 415 x 365	345 x 345 x 335	15
TRB2C	TransBank Chem TM	20	530 x 485 x 540	445 x 415 x 510	35
TRB4C	TransBank Chem TM	28	880 x 485 x 540	790 x 415 x 510	70

Note: Weights and dimensions are approximate. External dimensions include handles.

The ultra-tough, lockable
vault for storing hazardous
chemicals and flammables

armorgard flambank™

- Ideal for use in external environments and vehicles
- Suitable for chemical or flammable storage
- Designed to comply with relevant COSHH regulations

30
MIN
RESISTANCE

FBC5



KEYED ALIKE 5-LEVER
DEADLOCKS WITH
HEAVY-DUTY
CHUBB-STYLE KEYS

STRONG GAS STRUTS AND
SAFETY CATCH FITTED TO
CONFORM TO INDUSTRY
STANDARDS



HIGH & LOW LEVEL
VENTILATION TO PREVENT
BUILD-UP OF FUMES

FULLY WELDED AND TESTED
SUMP BASE TO PREVENT
LEAKAGE

HAZARDOUS GOODS STORAGE



Product Code	Description	Weight (kg)	External Dimensions W x D x H (mm)	Internal Dimensions W x D x H (mm)	Sump Capacity (L)
FB1	Van Box	46	980 x 540 x 475	895 x 470 x 465	60
FB21	Site Box	64	765 x 675 x 670	675 x 605 x 575	40
FB2	Site Box 4x2x2	82	1275 x 665 x 660	1185 x 600 x 575	85
FBC2	Site Chest	107	765 x 675 x 1270	675 x 605 x 1185	50
FBC4	Site Chest 4x4x2	153	1275 x 675 x 1270	1185 x 605 x 1185	85
FBC5	Site Chest 5x4x2	174	1585 x 675 x 1275	1500 x 605 x 1185	110
FBC8	Site Chest	334	2370 x 985 x 1220	2350 x 895 x 1130	250

Note: Weights and dimensions are approximate. External dimensions include handles.

The high security,
lockable vault for the
safe storage of chemicals

armorgard **chembank™**

- Finished in bright yellow with relevant hazard warning signs
- The tough welded construction delivers maximum protection
- Powder coated for maximum durability



ROBUST AND SECURE
KEYED ALIKE 5 LEVER



STRONG GAS STRUTS
AND SAFETY CATCH
FITTED AS STANDARD



HAZARD
WARNING
SIGNS

HAZARDOUS GOODS STORAGE

Product Code	Description	Weight (kg)	External Dimensions W x D x H (mm)	Internal Dimensions W x D x H (mm)	Sump Capacity (L)
CB2	Site Box 4x2x2	86	1275 x 665 x 660	1185 x 600 x 575	85
CBC4	Site Chest 4x4x2	150	1275 x 675 x 1270	1185 x 605 x 1185	85

Note: Weights and dimensions are approximate. External dimensions include handles.

armorgard

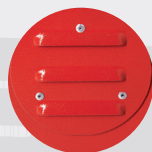
flamstorTM cabinet

The secure storage cabinet
that keeps your hazardous
substances safe,
organised and accessible

- Powder coated for maximum durability
- Fully adjustable shelves (only on FSC1, FSC2 AND FSC3)
- Finished in bright red with relevant hazard warning signs fitted as standard
- Flame arrester gauze fitted on all ventilation



KEYED ALIKE 5-LEVER
DEADLOCKS BOTH SIDES,
WITH HEAVY-DUTY
CHUBB-STYLE KEYS



HIGH & LOW LEVEL
VENTILATION TO PREVENT
BUILD-UP OF FUMES

Product Code	Description	Weight (kg)	External Dimensions W x D x H (mm)	Internal Dimensions W x D x H (mm)	Sump Capacity (L)
FSC1	FlamStor Cabinet TM	45	500 x 530 x 980	490 x 465 x 895	40
FSC2	FlamStor Cabinet TM	74	800 x 585 x 1250	790 x 540 x 1170	115
FSC3	FlamStor Cabinet TM	111	1205 x 580 x 1555	1185 x 510 x 1475	130
FSC4	FlamStor Cabinet TM	170	1350 x 780 x 1560	1340 x 695 x 1260	190
FSC5	FlamStor Cabinet TM	500	2500 x 750 x 2300	2420 x 650 x 2000	300

Note: Weights and dimensions are approximate. External dimensions include handles.

A storage unit suitable
for storing many types of
hazardous substances

armorgard drumcage™

- Storage in accordance with COSHH standards for hazardous substances
- Robust construction with integrated fully welded 290L sump
- Suitable for securing tools and equipment as well as gas cylinders



HAZARDOUS GOODS STORAGE

Product Code	Description	Weight (kg)	External Dimensions W x D x H (mm)	Internal Dimensions W x D x H (mm)	Sump Capacity (L)
DRC4	DrumCage™	215	1215 x 1265 x 2100	1150 x 1200 x 1800	290

Note: Weights and dimensions are approximate. External dimensions include handles.

The enclosed store and spill
pallet for the safe storage of
oil drums

- Strong gas struts fitted as standard - conforms to industry standards
- Raised removable open floor
- Powder coated for maximum durability
- Meets relevant regulation for storing fuel or chemicals

 **armorgard**
drumbank™



HEAVY-DUTY DOOR
WITH TWO 5-LEVER
DEADLOCKS



HAZARDOUS GOODS STORAGE

The enclosed unit for
the safe storage of IBC
containers or oil drums

- Provides safe storage for 205-litre drums
- Robust build quality
- Wide-opening doors and spacious interior for ease of access
- Meets relevant regulation for storing fuel or chemicals

armorgard drumbank™



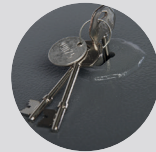
DB2S



DBIBC1



FORKLIFT SKIDS
MAKE IT EASY
TO MANOEUVRE



HEAVY-DUTY DOOR
WITH TWO 5-LEVER
DEADLOCKS

HAZARDOUS GOODS STORAGE

Product Code	Description	Weight (kg)	External Dimensions W x D x H (mm)	Internal Dimensions W x D x H (mm)	Sump Capacity (L)
DB2	2 Drum Drumbank™	178	1385 x 1075 x 1345	1290 x 860 x 1100	295
DB4	4 Drum Drumbank™	231	1420 x 1345 x 1290	1300 x 1225 x 1050	485
DBP2	Drumbank™ Pallet	20	1310 x 750 x 435	N/A	250
DBP4	Drumbank™ Pallet	32	1290 x 1380 x 280	N/A	405
DB2S	Drumbank™	255	1405 x 925 x 2195	1305 x 775 x 1810	240
DB4S	Drumbank™	345	1405 x 1420 x 2195	1305 x 1280 x 1810	370
DBIBC1	Drumbank™	390	1500 x 1530 x 2210	1380 x 1380 x 1645	1100

Note: Weights and dimensions are approximate. External dimensions include handles.

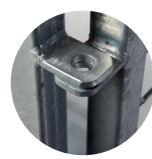
armorgard
tuffcage™

The one-piece folding security cage for storing your gas cylinders and costly equipment

- Galvanised for maximum durability in all weather conditions
- Quick and easy to erect and dismantle
- Suitable for securing tools and equipment as well as gas cylinders



ONE-PIECE CONSTRUCTION WITH NO REMOVABLE PARTS



2 SECURE PADLOCK POINTS



FOLDS DOWN TO A HEIGHT OF JUST 180MM

Product Code	Description	Weight (kg)	External Dimensions W x D x H (mm)	Internal Dimensions W x D x H (mm)	No. Standard Size Gas Bottles
TC1.2	TuffCage™	133	1300 x 1240 x 1800	1220 x 1090 x 1760	47/19

Note: Weights and dimensions are approximate. External dimensions include handles.

armorgard
gorilla gas cage™

The unique galvanised security cage specially designed for storing gas cylinders

- Robust construction using 25mm box sections and 3mm wire mesh
- Relevant hazard warning signage attached
- Padlock point to secure unit from theft
- Facility to fix to ground, for added security and stability



Product Code	Description	Weight (kg)	External Dimensions W x D x H (mm)	Internal Dimensions W x D x H (mm)
GGC1	Gas Bottle Cage	40	1012 x 563 x 931	950 x 500 x 900
GGC3	Gas Bottle Cage	60	912 x 566 x 1831	850 x 500 x 1800
GGC4	Gas Bottle Cage	68	1212 x 1266 x 1231	1150 x 1200 x 1200
GGC5	Gas Bottle Cage	67	912 x 966 x 1831	850 x 900 x 1800
GGC6	Gas Bottle Cage	87	1212 x 1266 x 1831	1150 x 1200 x 1800
GGC7	Gas Bottle Cage	98	1812 x 966 x 1831	1750 x 900 x 1800
GGC8	Gas Bottle Cage	108	1812 x 1266 x 1831	1750 x 1200 x 1800
GGC9	Gas Bottle Cage	135	1812 x 1866 x 1831	1750 x 1800 x 1800

*8 more sizes available

Note: Weights and dimensions are approximate. External dimensions include handles.

armorgard **turntable** **truck™**

For transporting bulk quantities of material and equipment

- Powder-coated finish for maximum durability
- Soft grip handles
- Raised heavy-duty deck for good ground clearance and easy loading
- Makes moving material around site easier and safer



MANUAL HANDLING PRODUCTS



**PRECISION STEERING
MECHANISM FOR EASY
MANOEUVRING**



**1000KG LOADING
CAPACITY**



**LARGE PUNCTURE-PROOF
SOLID RUBBER WHEELS**

Product Code	Description	Weight (kg)	External Dimensions W x D x H (mm)	Folded Down Dimensions W x D x H (mm)	Weight Loading
TT1000	Turntable Truck™	93	690 x 2540 x 460	690 x 1560 x 770	1000kg

Note: Weights and dimensions are approximate. External dimensions include handles.

**Robust hand sanitiser
stations for internal
high-traffic environments**

armorgard

sanistation mini™

- Compatible with standard 5L bottles
- Low dosage 5L bottle pump (2ml) to reduce spillage
- Free-standing, fixed to the floor or castors available for mobility
- Built-in secure storage for extras (S10HF)
- Simple wall-mounted bracket (S10WM)

S10WM



S10S



S10HF



BWM500



Product Code	Description	Weight (kg)	External Dimensions W x D x H (mm)	Internal Dimensions W x D x H (mm)
S10HF	SaniStation Mini™ Hands Free	15	155 x 275 x 1015 (Base Plate: 400 x 325)	N/A
S10S	SaniStation Mini™ Standard	12	200 x 1000 (Base Plate: 400)	N/A
S10WM	SaniStation Mini™ Wall Mounted	2	200 x 240	N/A
BWM500	Wall-Mounted Bucket Holder	1	248 x 243 x 114	Ø205

Note: Weights and dimensions are approximate. External dimensions include handles.

Unique solution for the
immediate deployment
of a central sanitising
and noticeboard station

- Easily relocatable with heavy-duty castors
- Two-sided to promote segregation
- Suitable for external use

 **armorgard**

sanistation™



BUILT-IN WHEELS
FOR EASE OF MOBILITY



OPTIONAL EXTRA
SECURE STORAGE FOR
ADDITIONAL SUPPLIES



RELEVANT SAFETY SIGNAGE
INCLUDED AS STANDARD

WELFARE RANGE

Product Code	Description	Weight (kg)	External Dimensions W x D x H (mm)	Internal Dimensions W x D x H (mm)
S20	SaniStation™	26.5	700 x 600 x 1725	N/A
S40	SaniStation™	72	1235 x 500 x 1850	N/A
S40C	SaniStation™ Cabinet	28	950 x 445 x 605	940 x 425 x 600

Note: Weights and dimensions are approximate. External dimensions include handles.

The mobile instant warm
water hand washing unit,
purpose built for sites

- Solid rubber tyres for rough terrain
- Weather-proof, wipe-clean, durable surface
- Easily manoeuvred by one individual
- Boiler with hot water reservoir for instant supply

armorgard

scrubkart™



STAINLESS STEEL
SINK AND TAP



INSTANT WARM WATER
HAND WASHING FACILITY
(110V OR 240V POWER)



HANDS-FREE
FOOT-OPERATED BIN
AND TAP



PATENT PENDING
APPLICATION NUMBER - 2006552.0

Product Code	Description	Weight (kg)	External Dimensions W x D x H (mm)	Internal Dimensions W x D x H (mm)
SBK1T	ScrubKart™ 110V Tank Fed	100	790 x 870 x 1450	N/A
SBK2T	ScrubKart™ 240V Tank Fed	100	790 x 870 x 1450	N/A
SBK3T	ScrubKart™ Tank Fed Cold Water	95	790 x 870 x 1450	N/A

Note: Weights and dimensions are approximate. External dimensions include handles.



Distributed by



The Vinery, Arundel Rd, Arundel, BN18 9PY

01903 726100
ask@fargro.co.uk
www.fargro.co.uk